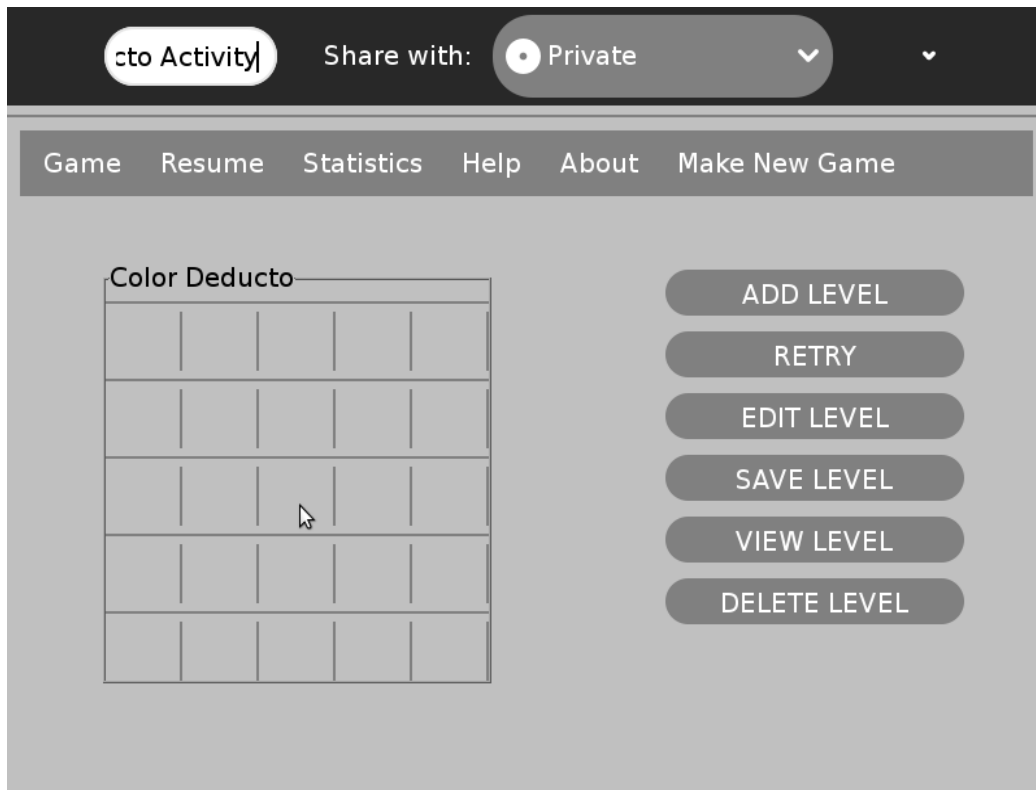
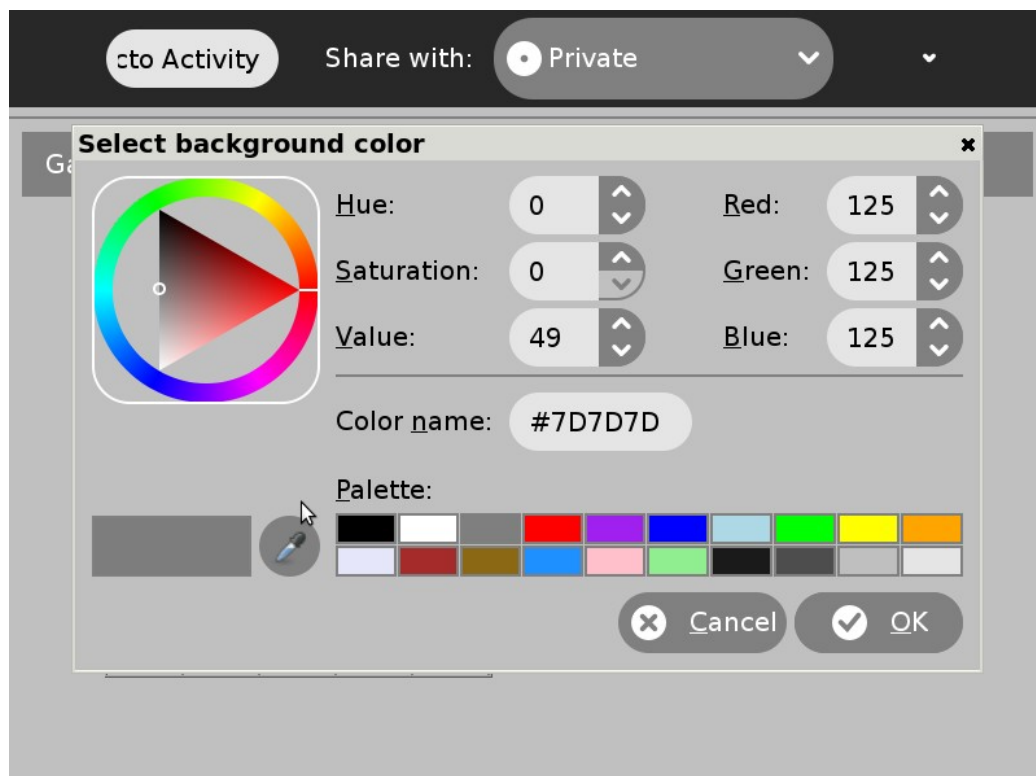


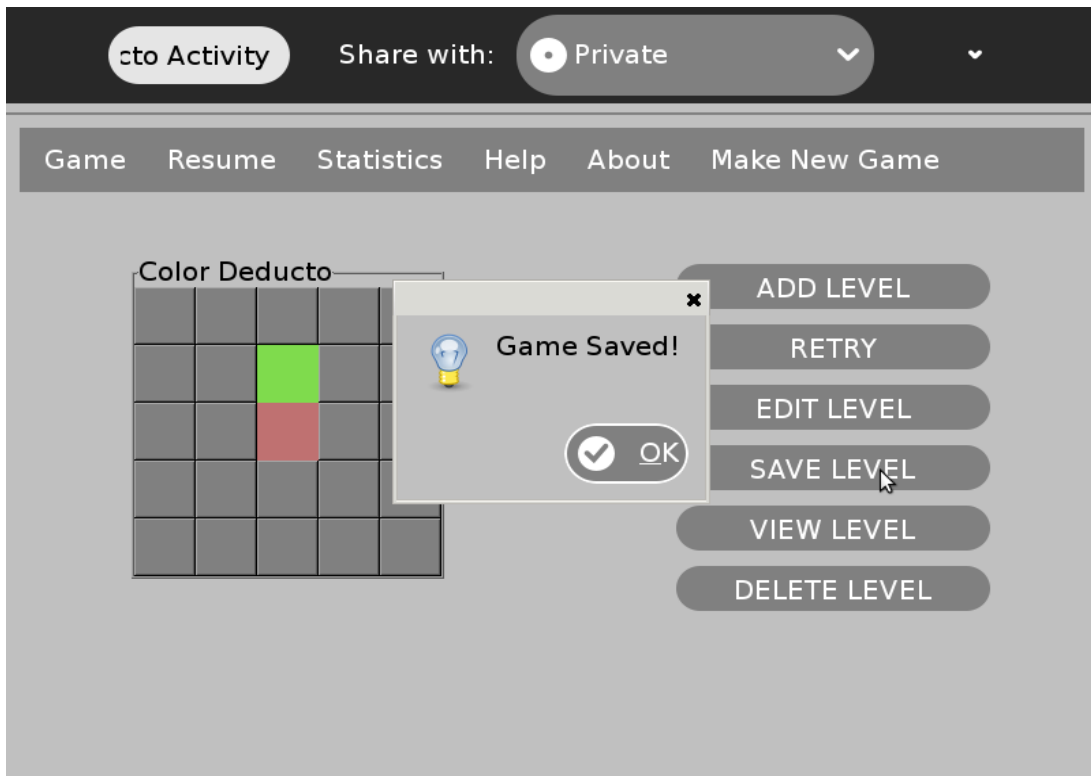
Click on the respective widgets to change their color.



2.A Color Selection block appears. Select the appropriate color to be filled in the selected widget.



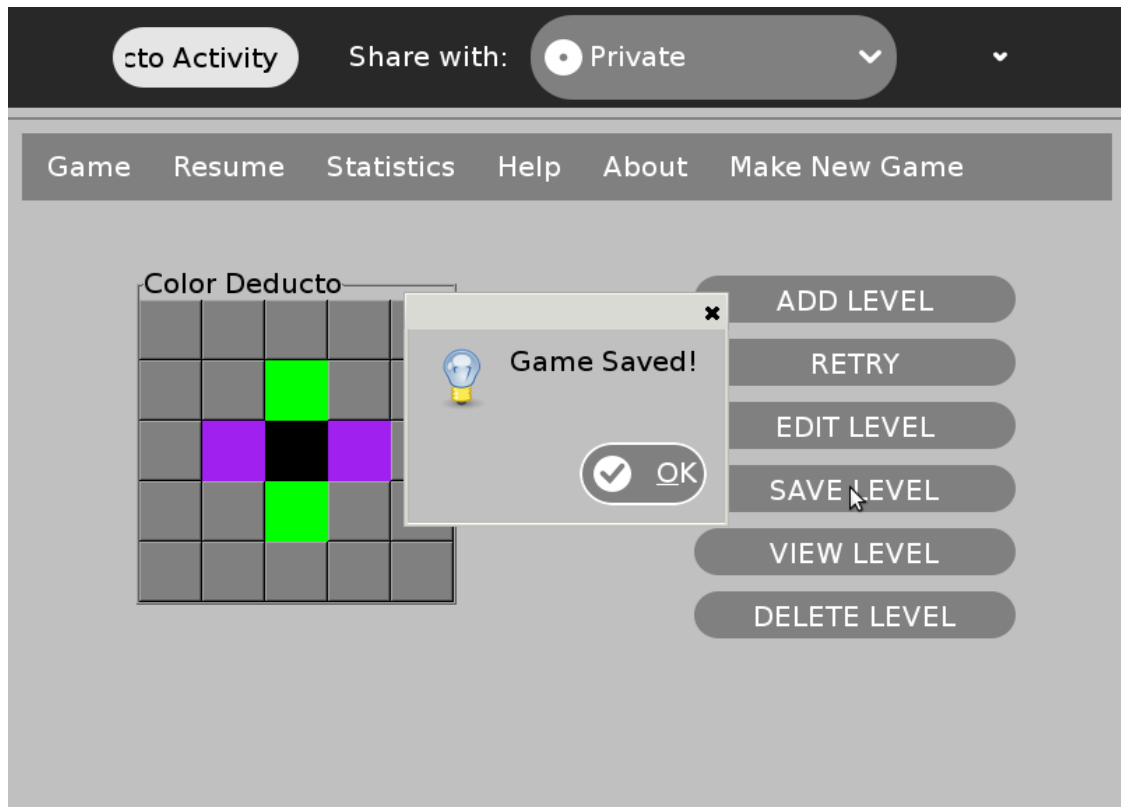
3. Once you set the logic by selecting appropriate colors, click on the 'SAVE LEVEL' widget to save your level. In the attached screenshot, 1st level gets saved.



4. Click on the widget 'ADD LEVEL' to add a new level to your game as follows.



2. Again follow the same procedure as in step 1, 2 and 3 to save the logic of your designed level 2.



Similarly save Level 3.

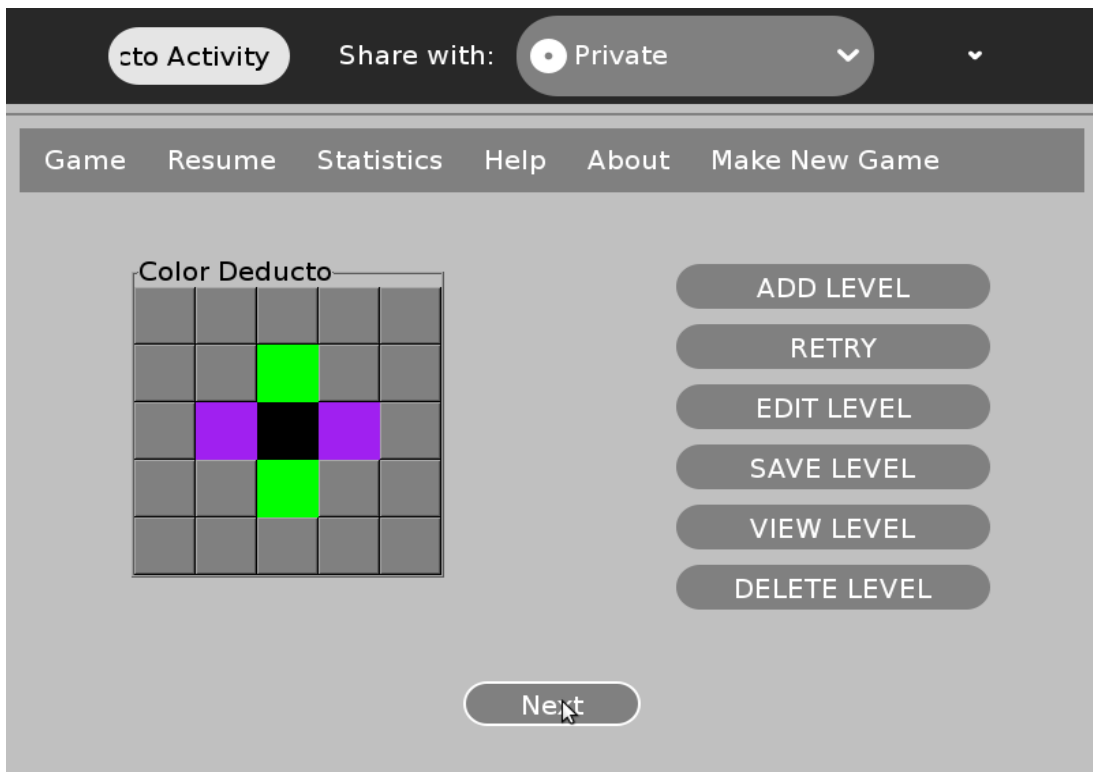
.Click on the widget 'VIEW LEVEL' to view all the levels designed by you.

Level 1

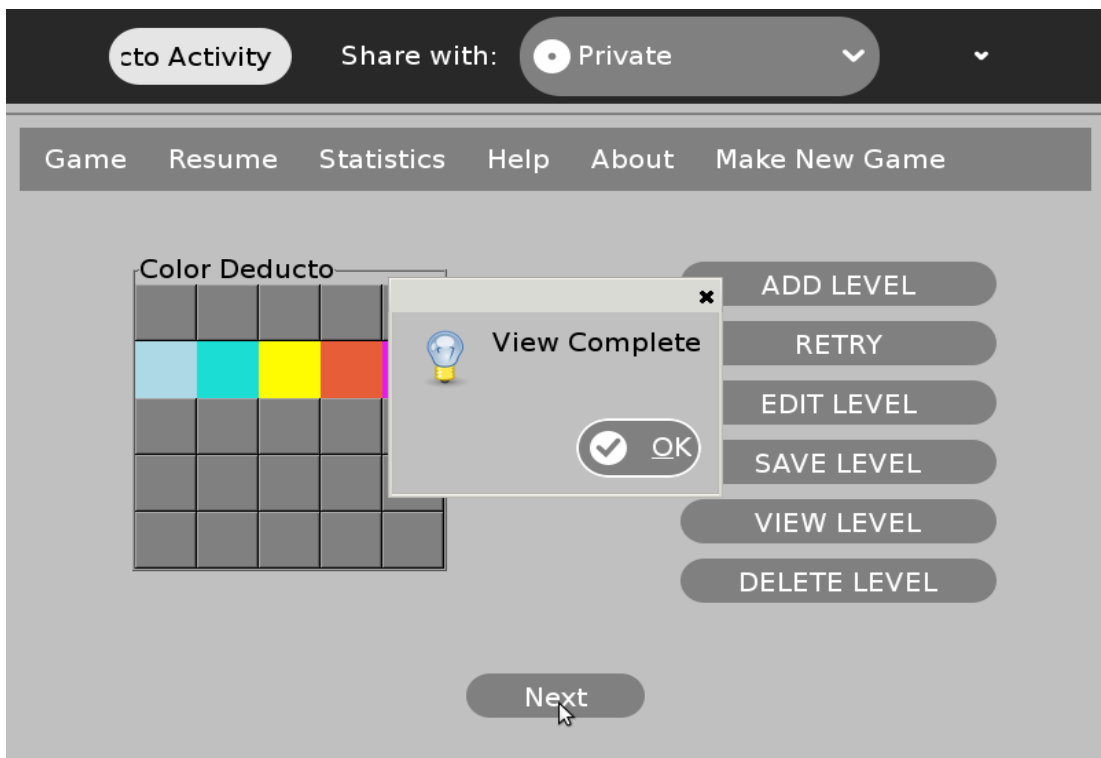


Click on 'Next' to view successive levels.

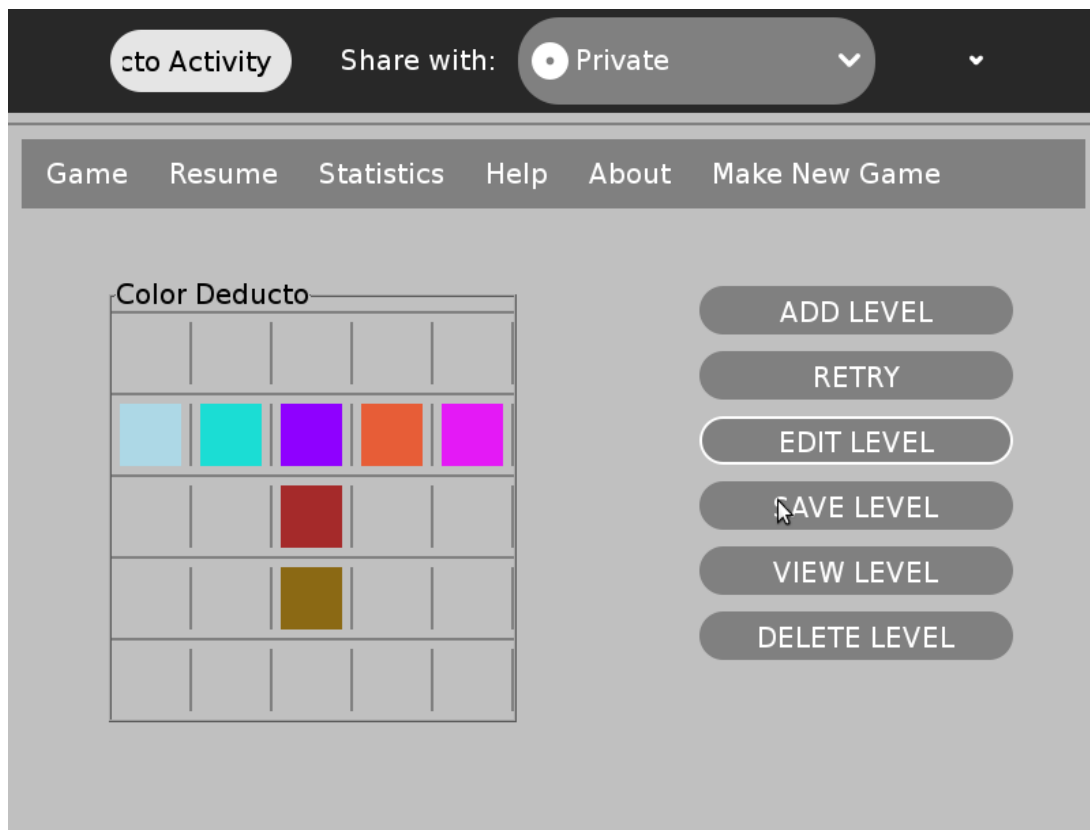
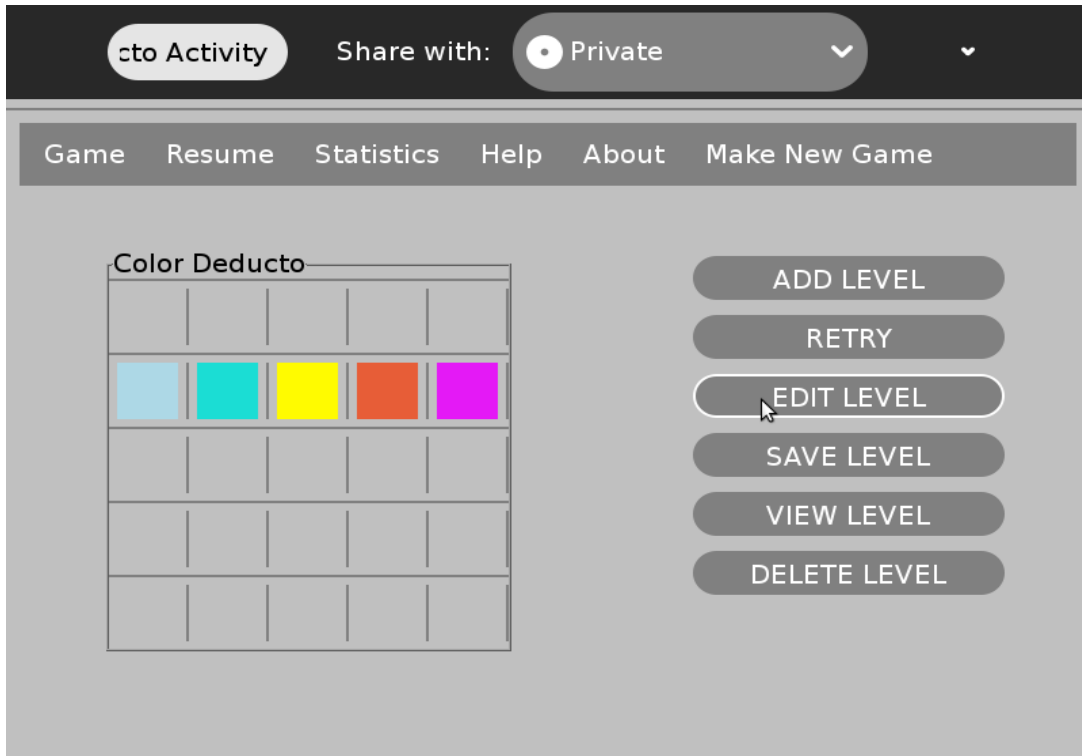
Level 2



Level 3



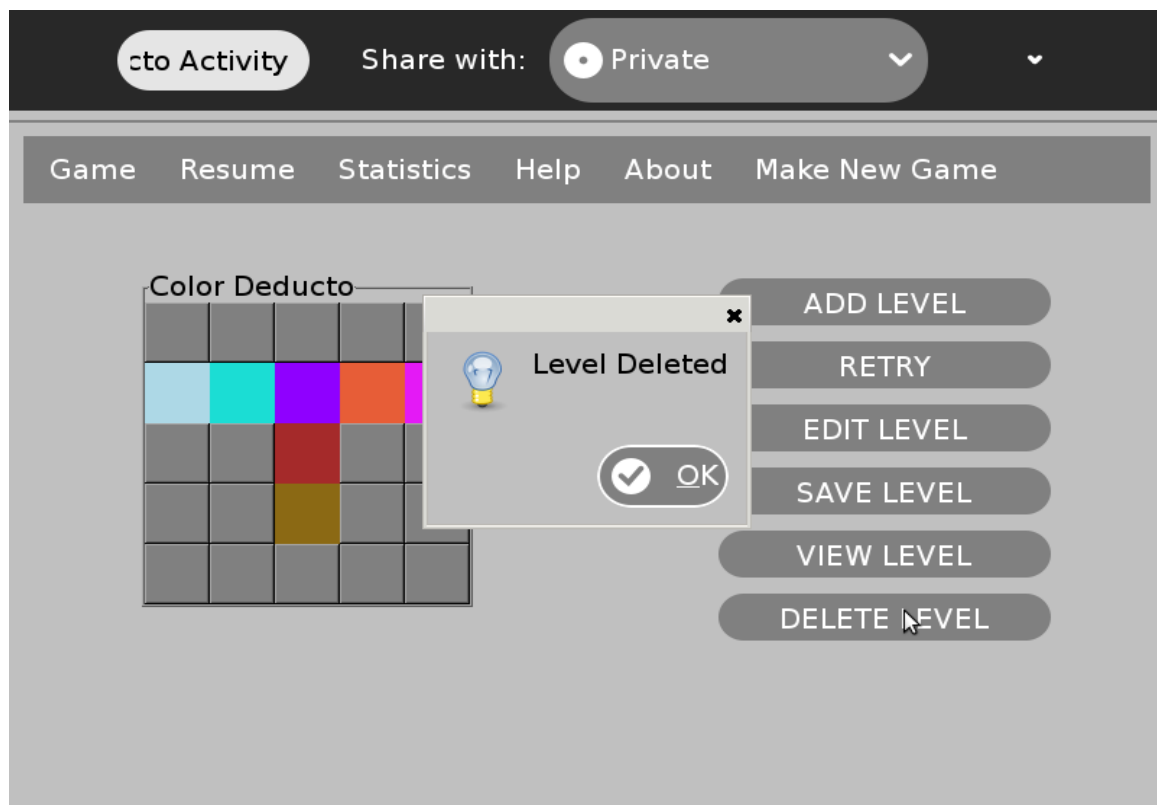
Click on 'EDIT LEVEL' incase you wish to change(edit) your logic.



Click again on 'SAVE LEVEL' to save to save your redesigned logic.

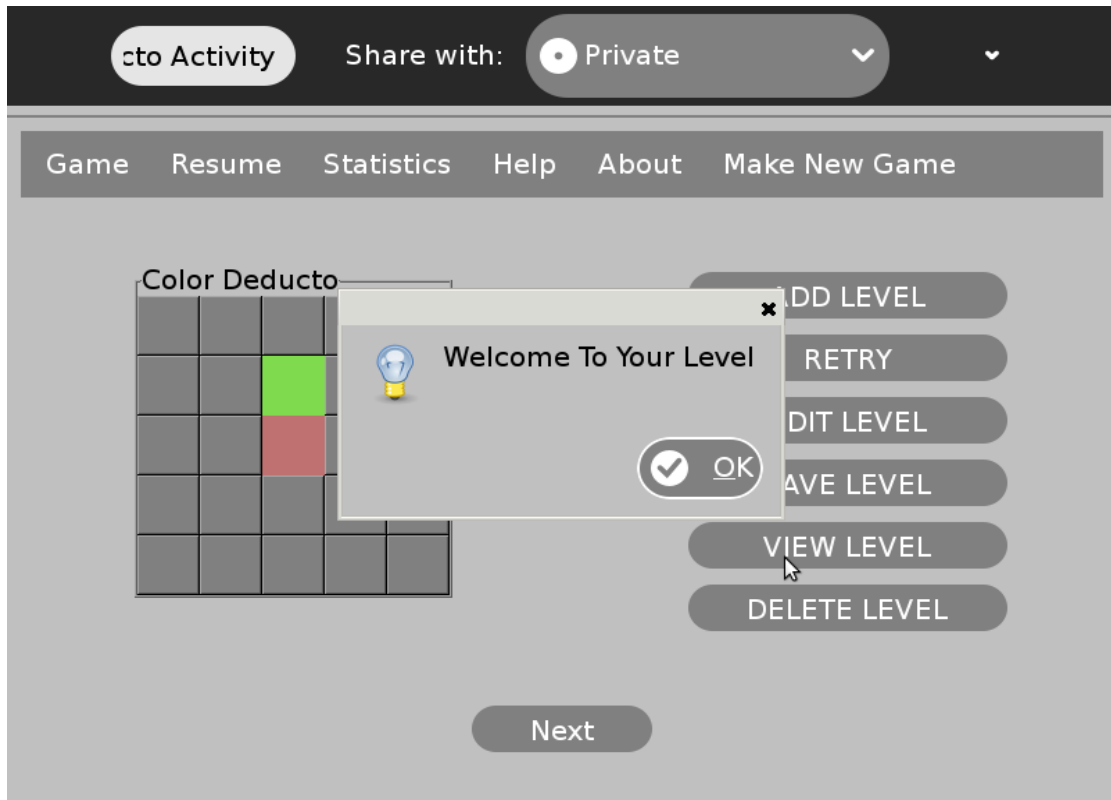


You can delete any level by clicking 'DELETE LEVEL'.

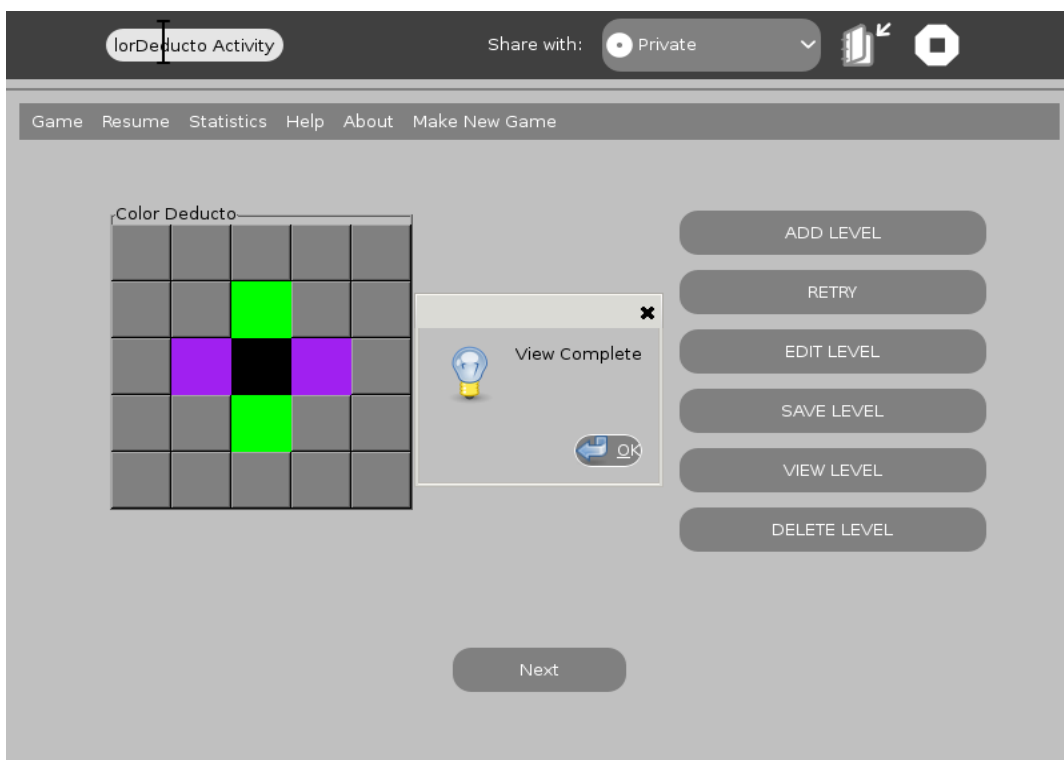


Now you have the following levels.(You can view them by clicking on 'VIEW LEVEL')

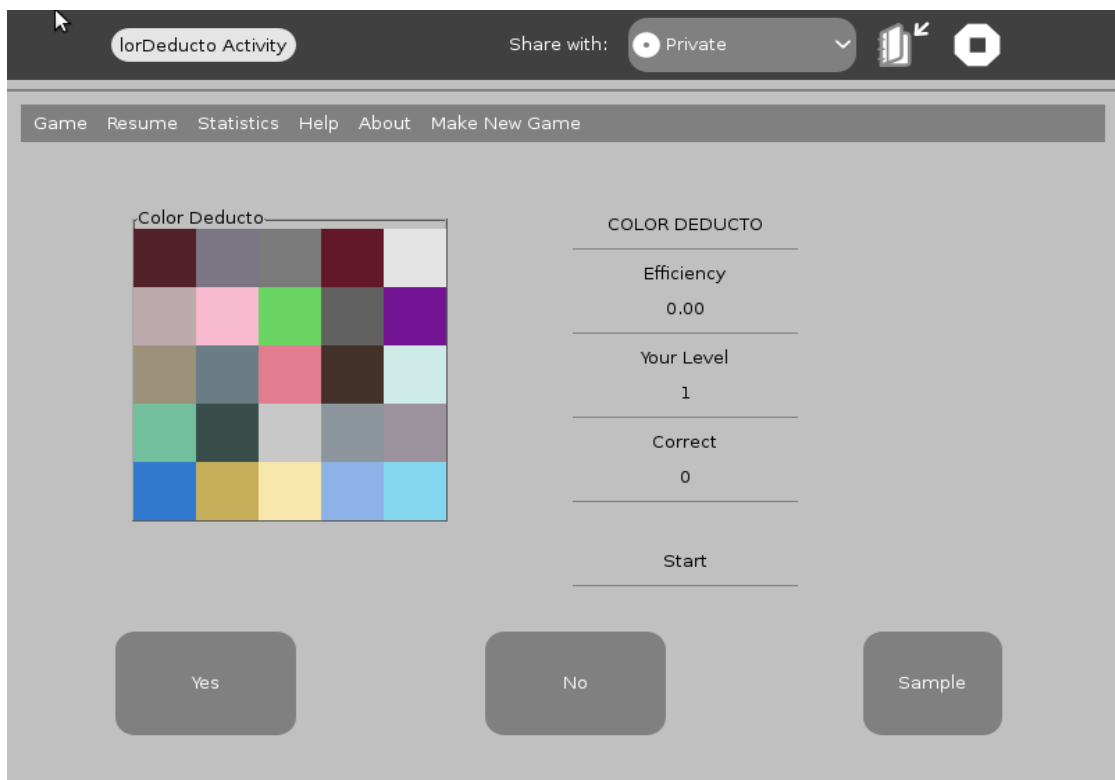
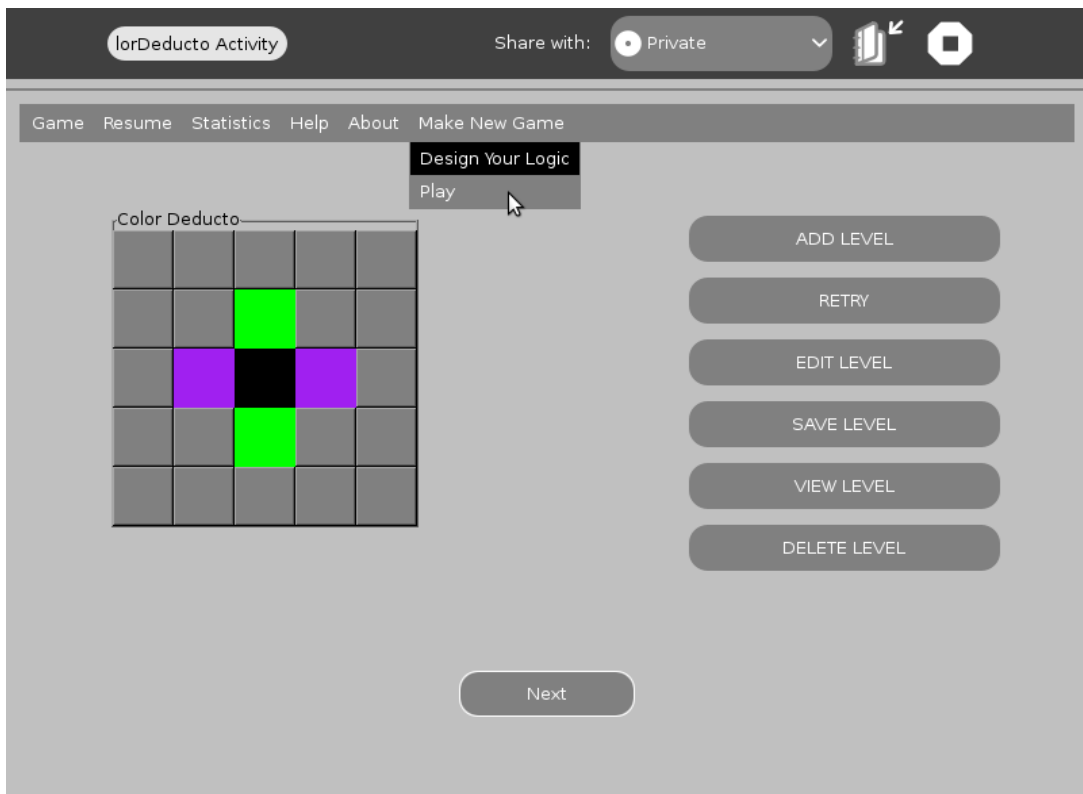
Level 1



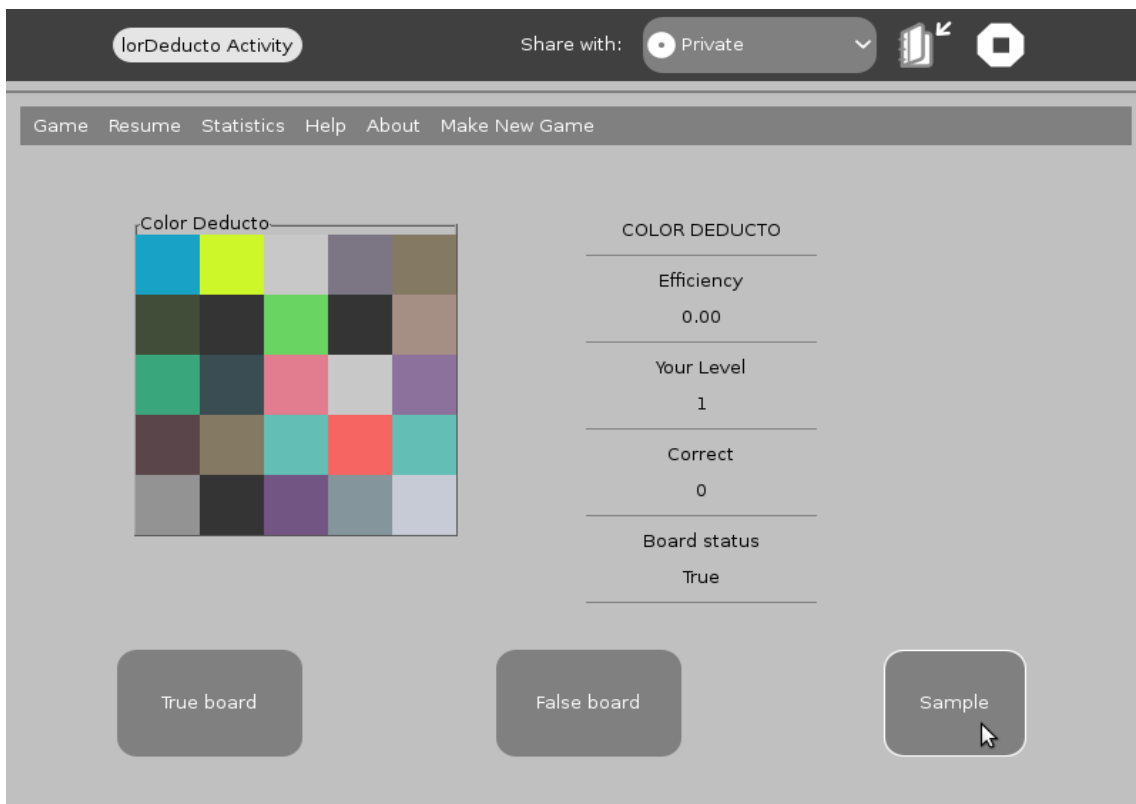
Level 2



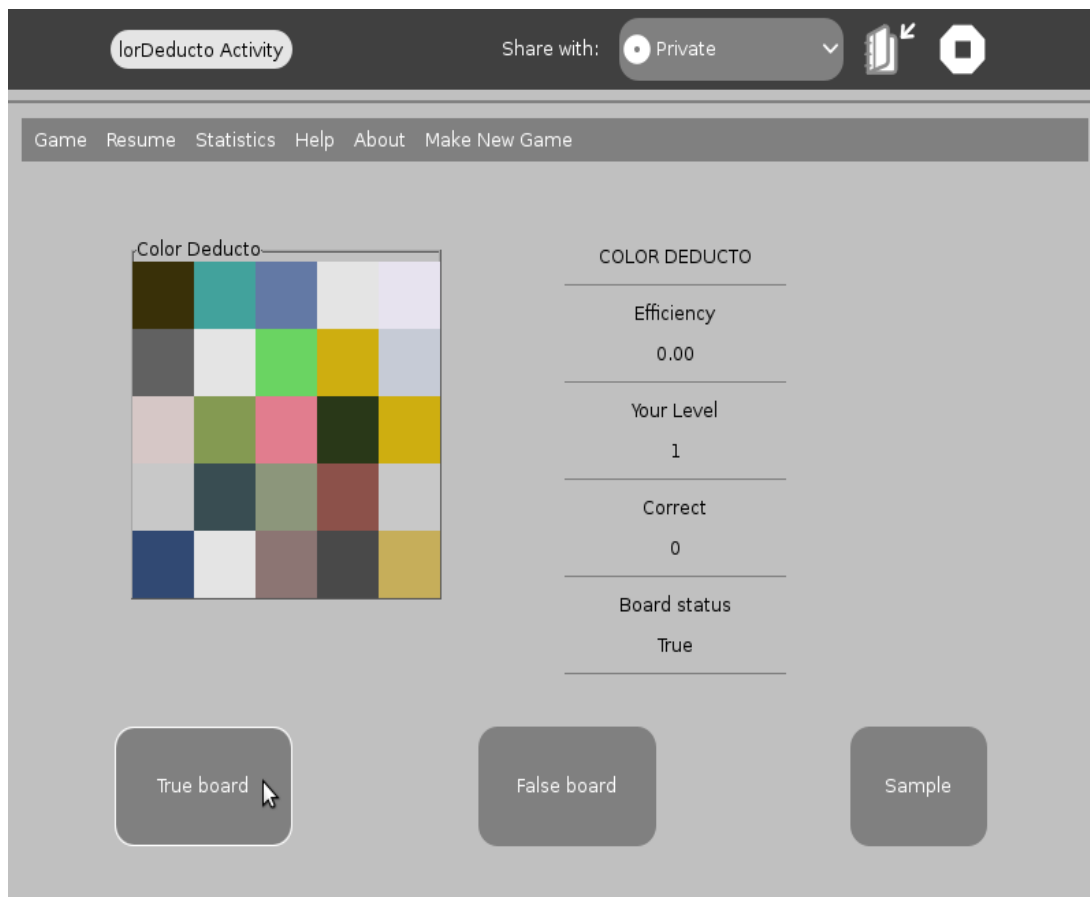
To play the game created by you, go to Make New Game->Play.



You can click 'Sample' to view 'True Board' and 'False Board'.



True Board



False Board

The screenshot shows the 'lorDeducto Activity' interface. At the top, there is a 'Share with:' dropdown menu set to 'Private'. Below this is a navigation bar with links for 'Game', 'Resume', 'Statistics', 'Help', 'About', and 'Make New Game'. The main content area features a 5x5 grid of colored squares labeled 'Color Deducto'. To the right of the grid is a statistics panel titled 'COLOR DEDUCTO' with the following data:

Efficiency
0.00
Your Level
1
Correct
0
Board status
False

At the bottom of the interface, there are three buttons: 'True board', 'False board' (which has a mouse cursor over it), and 'Sample'.

Game can be resumed by clicking Resume->Resume Game

This screenshot is identical to the one above, but with the 'Resume Game' option highlighted in the navigation bar. The 'Resume Game' link is underlined and has a mouse cursor pointing to it. The statistics panel and buttons remain the same as in the previous screenshot.

Start playing the game.

lorDeducto Activity Share with: Private

Game Resume Statistics Help About Make New Game

Color Deducto

White	Brown	Dark Purple	Pink	Green
Brown	Grey	Green	White	Light Green
Cyan	Light Green	Pink	Brown	Cyan
Red	Dark Purple	Pink	Pink	Dark Green
Light Blue	Brown	White	Green	Blue

COLOR DEDUCTO

Efficiency
100%

Your Level
1

Correct
4

Your answer
Right

Yes No Sample

lorDeducto Activity Share with: Private

Game Resume Statistics Help About Make New Game

Color Deducto

Dark Green	Light Green	Grey	Dark Red	Purple
Grey	Light Green	White	Dark Green	Purple
Cyan	Yellow	Pink	Pink	Brown
Dark Green	Dark Green	Dark Green	Blue	Light Blue
Dark Purple	Grey	Grey	Dark Green	Brown

COLOR DEDUCTO

Efficiency
100%

Your Level
2

Correct
3

Your answer
Right

Yes No Sample

Once you clear all levels created by you, the game gets resumed to the stage where you had left the pre-defined levels.

